



2023



GRAND POINT  
CHURCH

## 2023 Year In Review

New Staff / Elders	3,4
Attendance	5
Next Steps	8
Vision Lanes	9-17
General Fund / Budget	19,20
Recap	22





# Welcome





## New 2023 Staff



**Nichelle Bergwall**

Kids Ministry Director - Shippensburg



**Maria Rodriguez**

Kid's Ministry Assistant Director



**Mitch Benedict**

Technical Arts Director



**Simon Henry**

Executive Director of Ministries



**Cressa Coldsmith**

Executive Director of Advancement





**Our staff and elders at Grand Point Church are committed to realizing the vision that God has given us to reach the city of Chambersburg and beyond for Christ.**



**Galen Bricker, Dennis Koontz, Marlin Zeis, Jason Dietz, Jeff Swartz, Mark Ward, Aaron Feather**

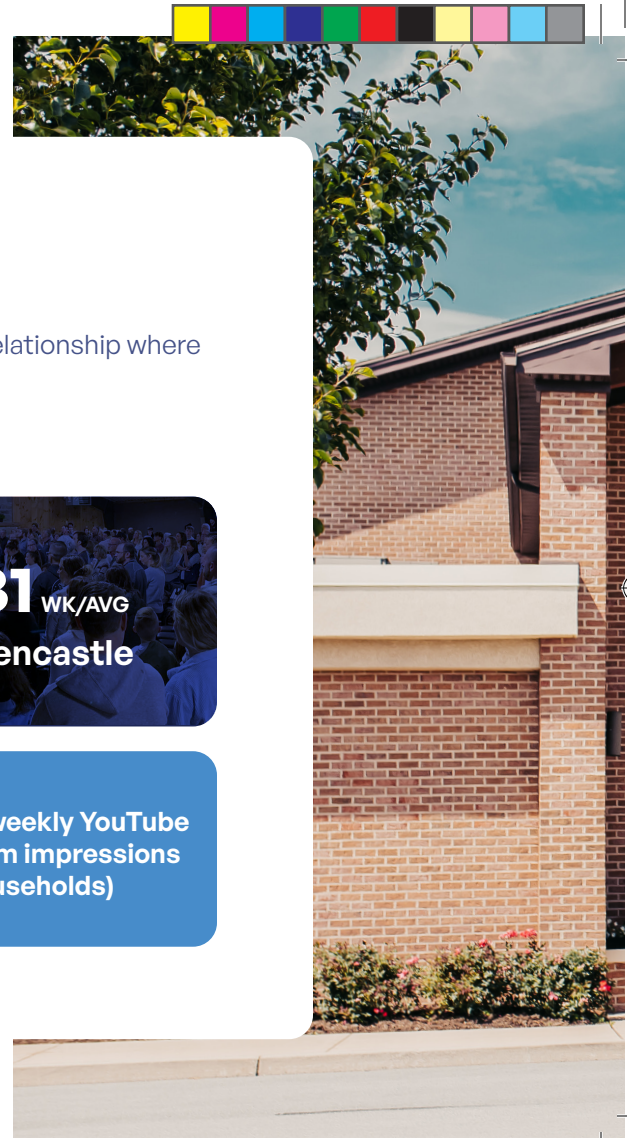




# Worship Attendance

We believe that discipleship happens best when we can gather for worship & relationship where we live – because it enables us to serve, grow in groups and invite friends.

**Our community gatherings include:**













## Next Steps

### Baptism

Baptism is not a finish line, but rather a starting line for spiritual growth. It is the beginning of a life-changing relationship with Jesus by recognizing his saving role in our lives. In 2023, 53 people decided to publicly express their commitment to Jesus through baptism.

### New Members

Official Church Membership is not a requirement to worship and serve at GPC. It does, however, represent a next step of commitment to the church and its mission. In 2023 49 people became members of GPC.

### Child Dedications

At GPC the dedication of children is not something we do because God requires it or because it gives special status to the child, but we do this to recognize and receive the gift of children that God has given to our GPC families. In 2023 we celebrated the gift of 40 children in services of dedication.





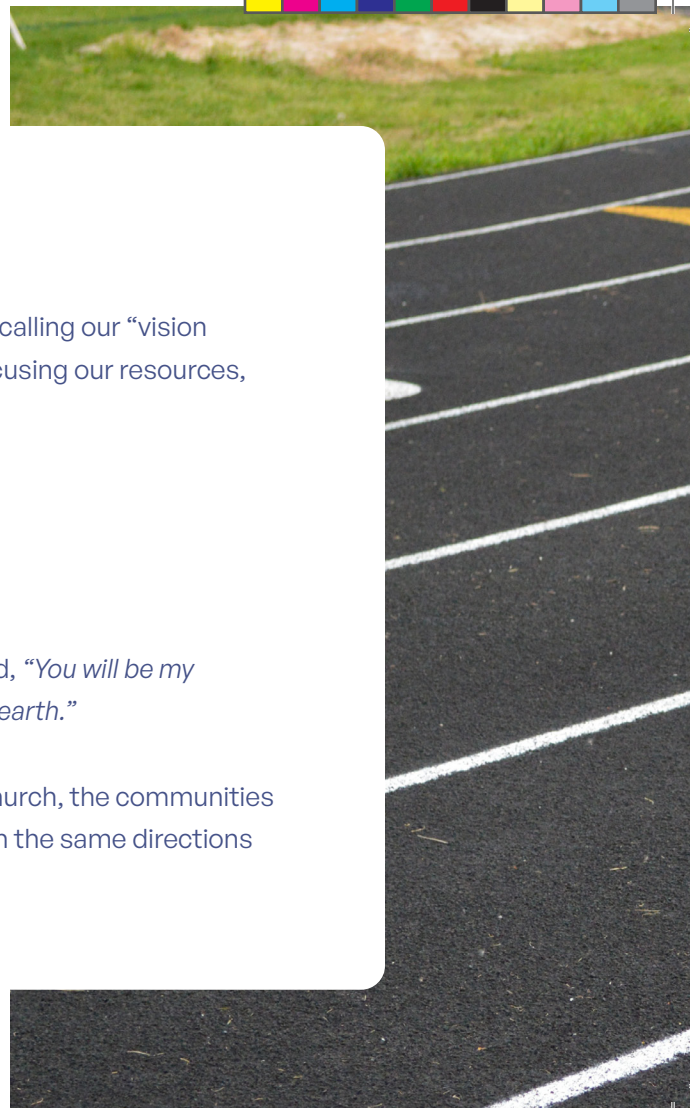
# Vision Lanes

God is already at work in three key areas here at Grand Point that we are calling our “vision lanes.” He is leading the way in these areas, and we are following him, focusing our resources, and your generosity, in the direction of these four areas.

- **Deeper Relationships with God and Each Other**
- **Greater Engagement with Community Partners**
- **Additional Partnerships with Global Communities**

After Jesus equipped the church with the power of the Holy Spirit he said, *“You will be my witnesses in Jerusalem and in all Judea and Samaria, and to the end of the earth.”*

In other words, their sphere of influence would be directed to the local church, the communities around them, and the world beyond them. The GPC Vision Lanes travel in the same directions accompanied by the invitation to be part of the journey.







The road to helping  
as many people as  
*possible* discover  
the joy of finding  
and following *Christ*









## Vision Lanes

# Deeper Relationships with God and Each Other

We believe the local church is God's plan A to reach people who don't know Jesus and we want to be a part of what God is doing in our community, and beyond, by deepening our relationships with God and each other.

## Every person seen, known, loved, and valued

- Increase our capacity for hospitality and care
- Increase the percentage of people connected in small groups from 35.2% to 55%.
- Increase the percentage of people serving from 28.5% to 50%.
- Ageless Ventures - a "60-plus" ministry coming this December!
- Night to Shine – a prom night experience for people with special needs, ages 14 and older - coming Feb. 2024!





## Vision Lanes

# Greater Engagement with Community Partners

God has led us to three distinct communities: Chambersburg, Shippensburg, and Greencastle - home for approx. 32,000 people. Each community has its social, cultural, and historical distinctives that make these communities unique.

We believe the church is called to serve its community and we will be very intentional to engage these communities with radical generosity. This will require an awareness of community activities, organizations, and other churches through whom we can serve and bless the community.

## 2024 Vision Specifics:

### Community Advocates

Every campus will have a designated community advocate for the purpose of building relationships and connections to community partners and events.

### Community Invitations

Inviting community pastors and business leaders to GPC for collaboration and training.

## Local Community Partners

Noah's House & Gracies Place • Network Ministry  
She's Somebody's Daughter  
JoyEl Ministry • Monarch's Way  
CCO Partners at Shippensburg University

### Community Involvement

## Chambersburg

- Hamilton Heights Backpack Program
- Work Days with Habitat for Humanity
- Support of the Cold Weather Shelter
- Operation Christmas Child

### Community Involvement

## Shippensburg

- Blessing Box Food Pantry
- Operation Christmas Child
- Provided water during Shippensburg Fair
- Shippensburg University Night

### Community Involvement

## Greencastle

- Greencastle Sidewalk Days
- Old Home Week
- Community food bank
- Served 30 holiday meals
- Heritage Christmas
- Operation Christmas Child







## Vision Lanes

# Youth Summer Missions Trips

## High School Missions

We prepared to go and impact the people of Wheelwright Kentucky, however we never expected the people of Wheelwright to impact us so much more.

## Middle School Missions

Our team served our communities and showed the love of Christ by caring for our neighbors in all walks of life.



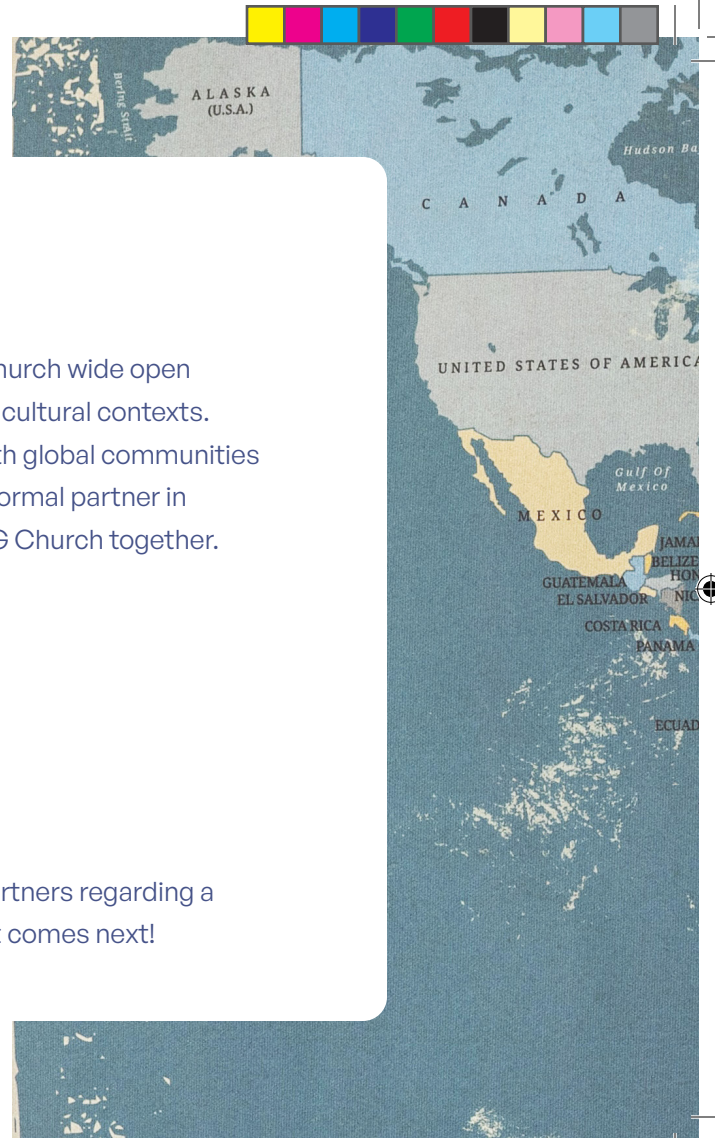
## Vision Lanes

# Global Partnerships

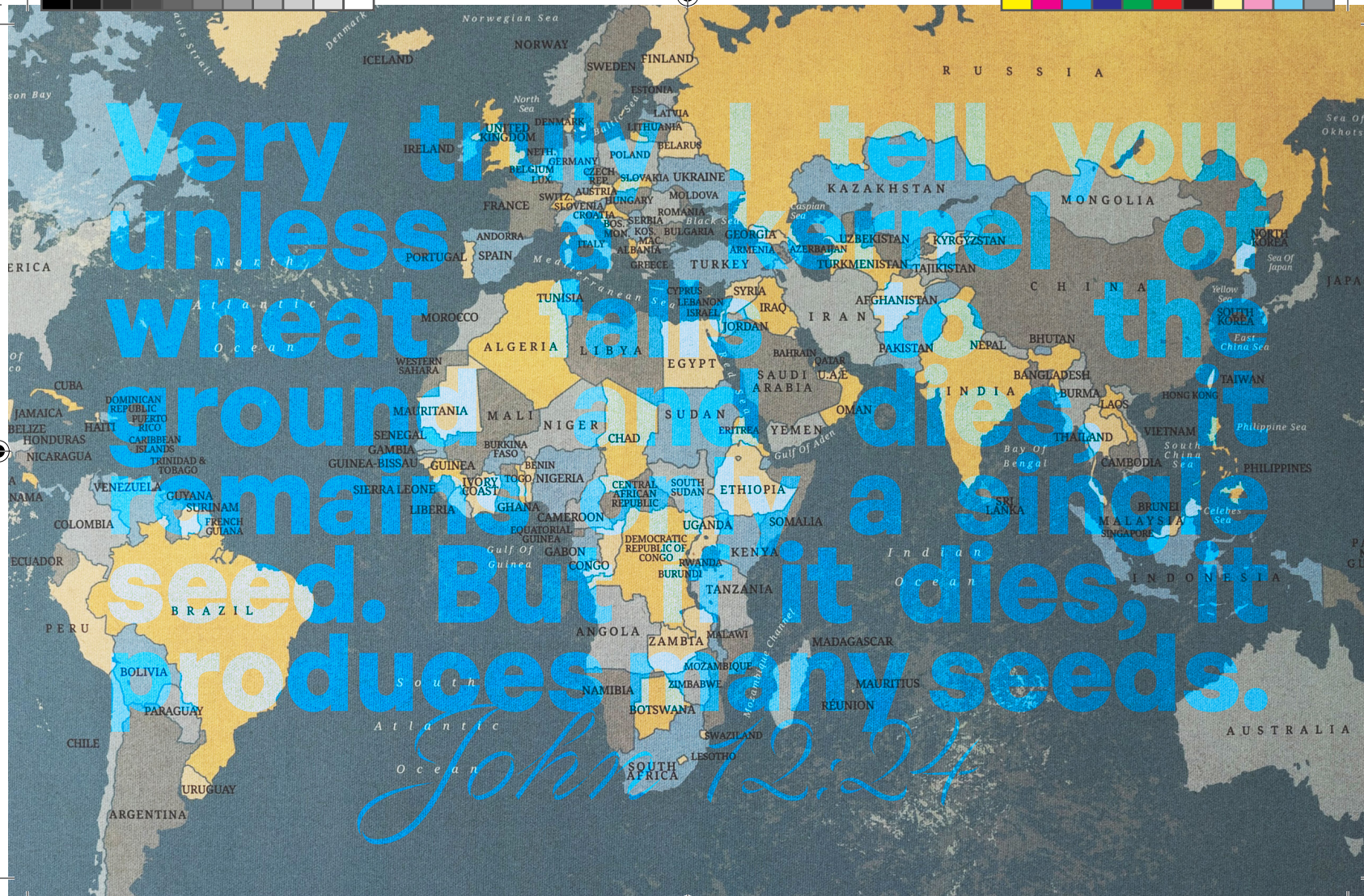
God's heart is to reach the entire world with the Gospel. His tool is the church wide open to opportunities, relationships, and partnerships with ministries in other cultural contexts. Everyone wins when the body works together. Strategic partnerships with global communities could involve sharing resources, networking, consulting, or becoming a formal partner in ministry. God is opening our hearts and eyes to ways we can build his BIG Church together.

## Global Community Partners

- Bangladesh Medical Tribes
- Chantelle Church and School in Haiti
- India Pastors
- Missions scholarships for GPC members
- ERC Missions Projects
- GPC leadership is currently in conversation with several global partners regarding a potential church plant in 2024. We can't wait to let you know what comes next!







# General Fund 2023

**\$3,083,077**

Projected giving  
to year end

**\$2,359,716**

Projected expenses  
to year end

**\$723,362**

Projected fund balance  
December 31, 2023

## Finances

- Deposits between \$235,862 and \$299,431 monthly
- Expenses between \$176,130 and \$240,579 monthly
- Continued Access donations go towards 12:24 Future Initiatives

## Mortgages

### God is Great!

Your faithfulness in giving has allowed us to pay off all church debt in 2023.

This was years ahead of plan and has saved many thousands of dollars in interest payments that can now go towards Kingdom work in our communities and around the world!

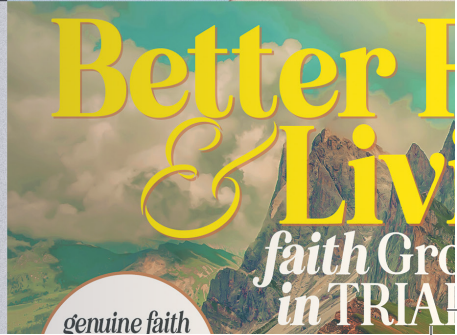
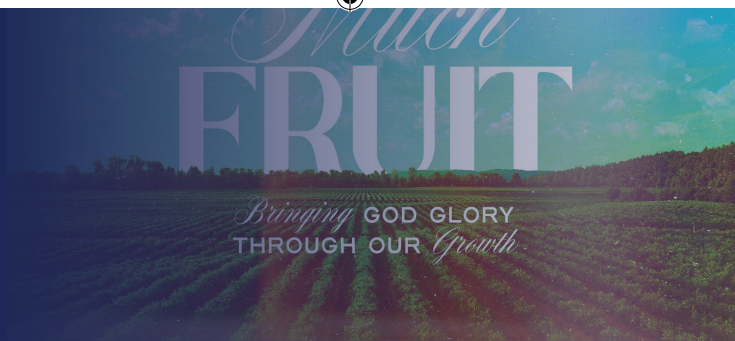


# 2024 General Fund Budget

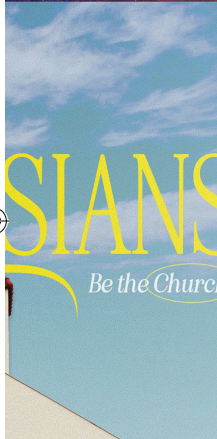
INCOME	2024 BUDGET	2023 BUDGET	\$ VARIANCE '23	% VARIANCE '24
Tithe & Offerings	\$ 3,127,573	3,050,592	76,981	3%
12:24 (Future Initiatives) Assistance	141,008	226,923	(85,915)	-38%
12:24 (Missions) Offerings	88,064	82,207	5,857	7%
<b>TOTAL INCOME</b>	<b>3,356,645</b>	<b>3,359,722</b>	<b>(3,077)</b>	<b>0%</b>
EXPENSE				
ERCCOG & 12:24 Donations	197,217	187,745	9,472	5%
Salary and Benefits	1,703,814	1,694,052	9,762	1%
12:24 (Missions)	92,600	91,600	1,000	1%
Adult Ministries	160,250	138,500	21,750	16%
Student Ministries	65,950	61,750	4,200	7%
Children's Ministries	59,650	59,650	-	0%
Worship Services	120,550	105,990	14,560	14%
Building, Property & Equipment	621,302	704,257	(82,955)	-12%
Administrative	175,429	197,004	(21,575)	-11%
<b>TOTAL EXPENSE</b>	<b>3,196,761</b>	<b>3,240,547</b>	<b>(43,786)</b>	<b>-1%</b>
<b>NET OPERATING SURPLUS</b>	<b>159,884</b>	<b>119,175</b>	<b>40,709</b>	<b>34%</b>



# To God be the Glory







In the past year, individuals at GPC experienced a renewed faith, restored marriages, or new trajectories for life. We give God all the glory, but we also want to acknowledge that God uses people to impact other people! In 2023 that's exactly what you did. You made an impact!

On average, **1,849** attended services at a campus each weekend and **145 households** watched our weekly livestream to hear the message of Jesus.

- **53** were baptized at GPC!
- **555** were involved in small groups.
- **114** were on serving in adult discipleship

Our giving totaled **\$3,083,077**, enabling us to not just cover our operating expenses, but to make a significant impact in our vision lanes. This past year, your generosity enabled us to pay off our building debt, allowing us to operate debt-free for the first time since 2006!

In 2024, we believe God is going to do even more in and through our church. With a growing membership and what God is calling us to do through our vision lanes, we can't wait to see all he has planned for us in the next season of our ministry.



Thank you for your ongoing support and generosity. Let's continue to follow Jesus and seek him in everything we do.

**Pastor Lawrence**

Lead Pastor



# Stay Connected

Stop by The Hub at any of our campus locations and talk to one of our volunteers.  
We would love to help you discover your next steps, find ways to use your gifts to serve  
at Grand Point Church, or connect with one of our Circles.

[www.grandpoint.church](http://www.grandpoint.church)  
[office@grandpoint.church](mailto:office@grandpoint.church)  
717-263-9523